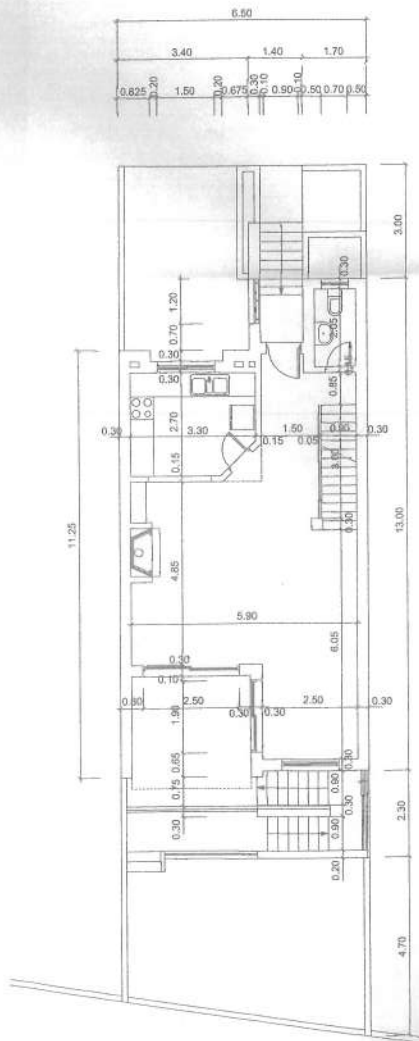


Lote 44 | Lote 43 | Lote 42

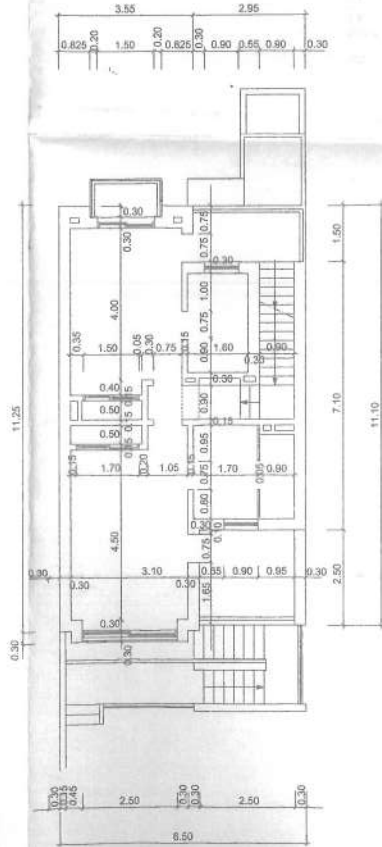
Alçado Principal

**CÂMARA MUNICIPAL DE LAGOA  
ALGARVE**  
Aprovado por Despacho de 14 JAN. 2005

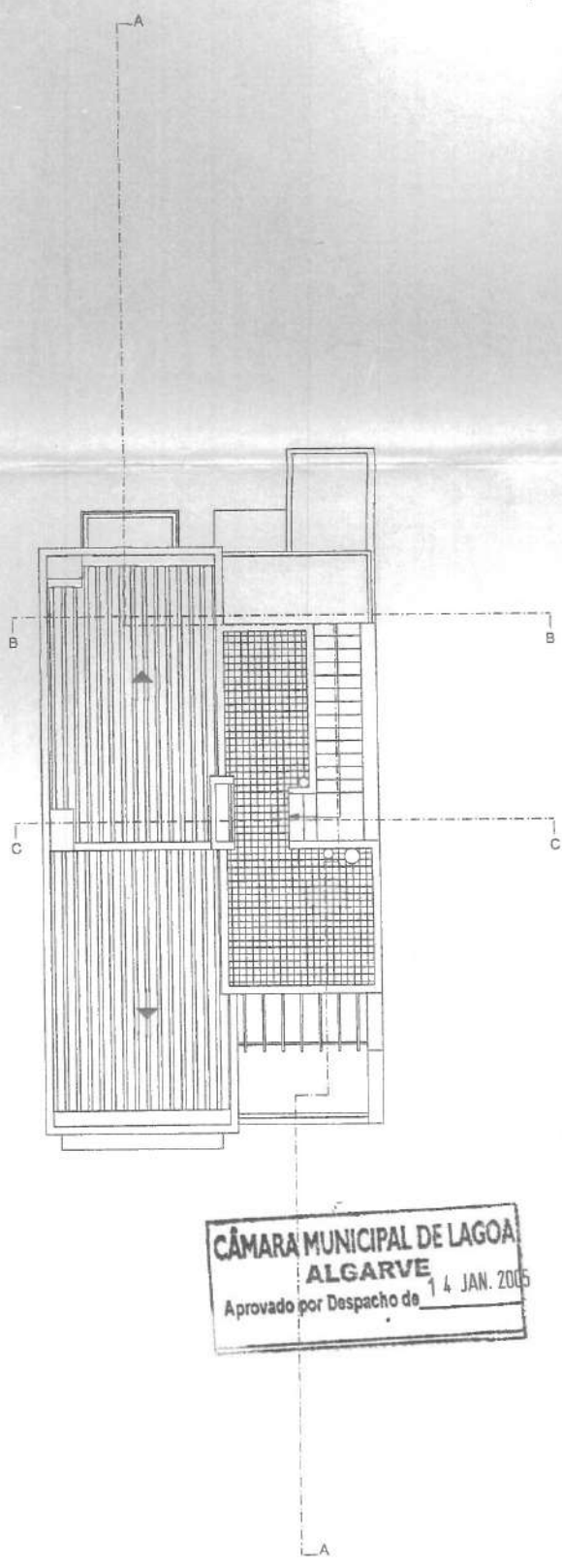
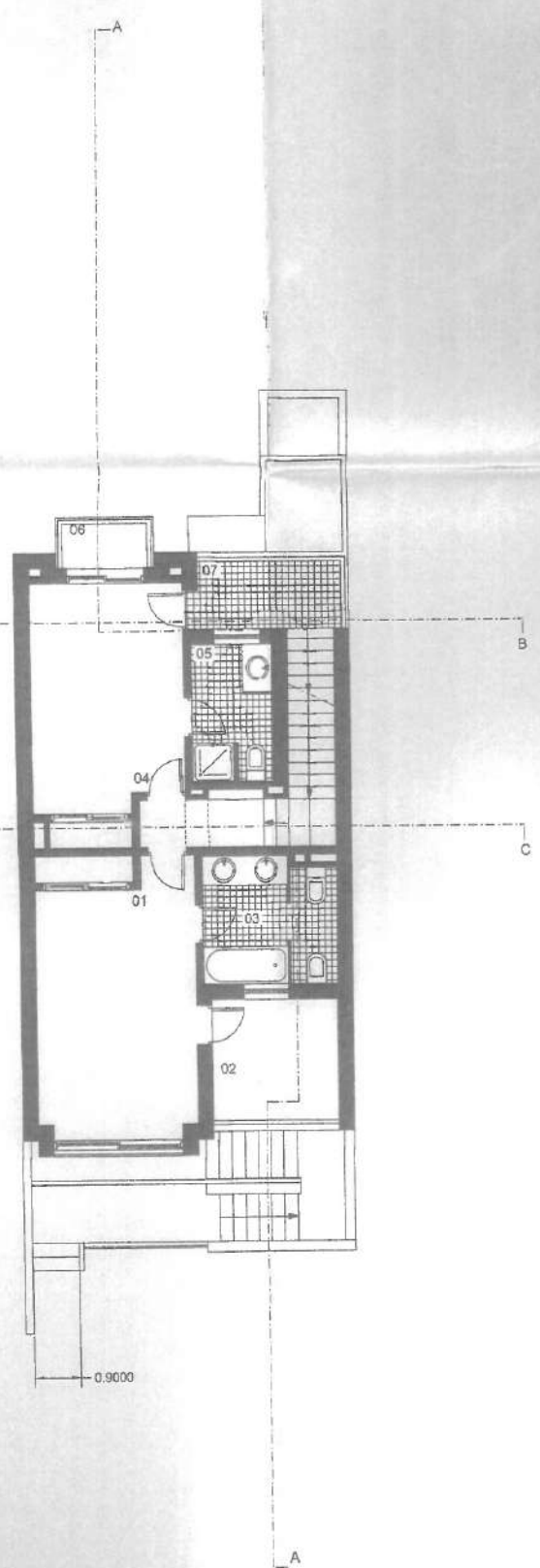
1/c



1/b



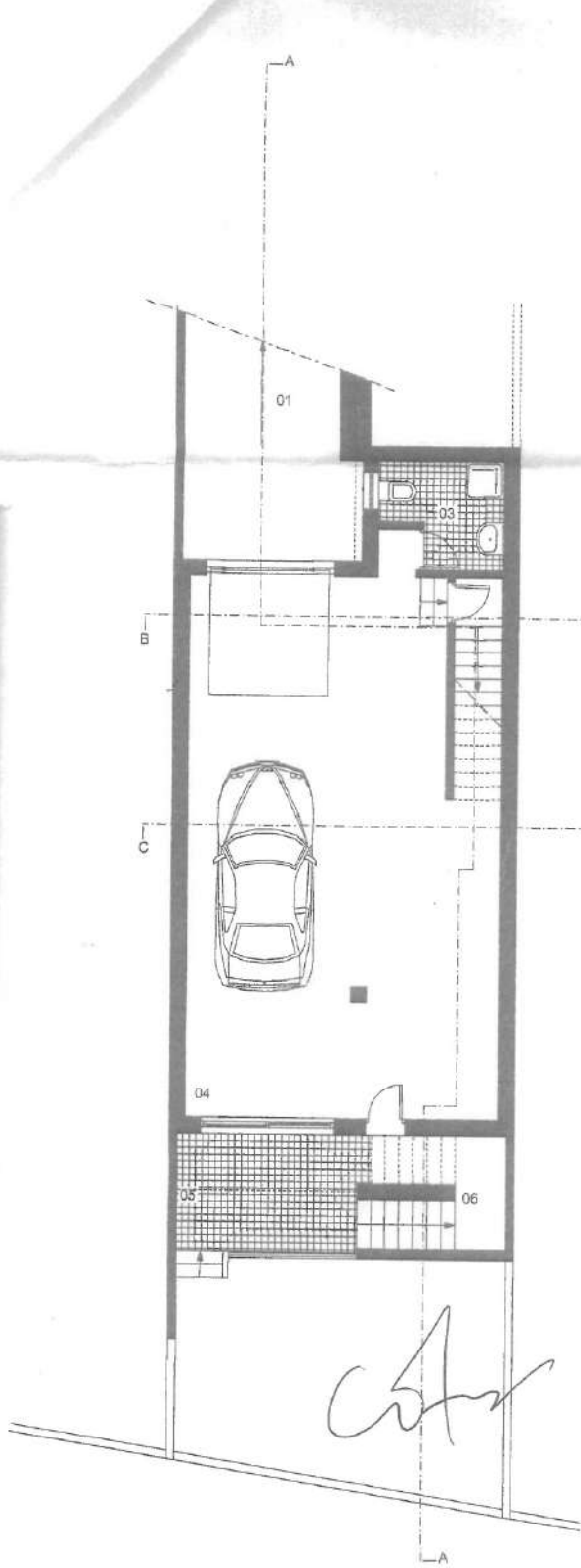
CÂMARA MUNICIPAL DE LAGOA  
ALGARVE  
Aprovado por Despacho de 14 JAN. 2015



**CÂMARA MUNICIPAL DE LAGOA  
ALGARVE**  
Aprovado por Despacho de 14 JAN. 2005

**1º Andar**

01 Quarto	16.50 m <sup>2</sup>
02 Terraço	7.40 m <sup>2</sup>
03 Banho	7.40 m <sup>2</sup>
04 Quarto	13.50 m <sup>2</sup>
05 I.S.	4.00 m <sup>2</sup>
06 Terraço	1.90 m <sup>2</sup>
07 Terraço	4.40 m <sup>2</sup>



Cave

- 01 .Rampa
- 02 .Sumidouro
- 03 .I.S. 4.00 m2
- 04 .Garagem 55.00 m2
- 05 .Terraço
- 06 .Arrumos

59 m2

1º Andar

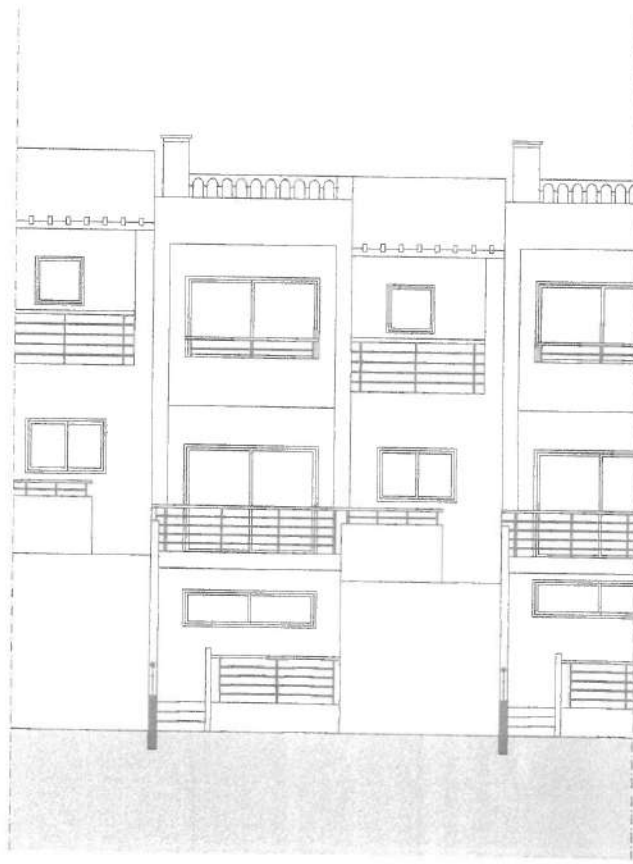
41.40

R/Chão

- 01 .Entrada
- 02 .I.S. 2.25 m2
- 03 .Sala 35.00 m2
- 04 .Cozinha 8.50 m2
- 05 .Zona de Refeições
- 06 .Terraço Coberto 7.75 m2

45.75

53.50



Alçado Posterior