



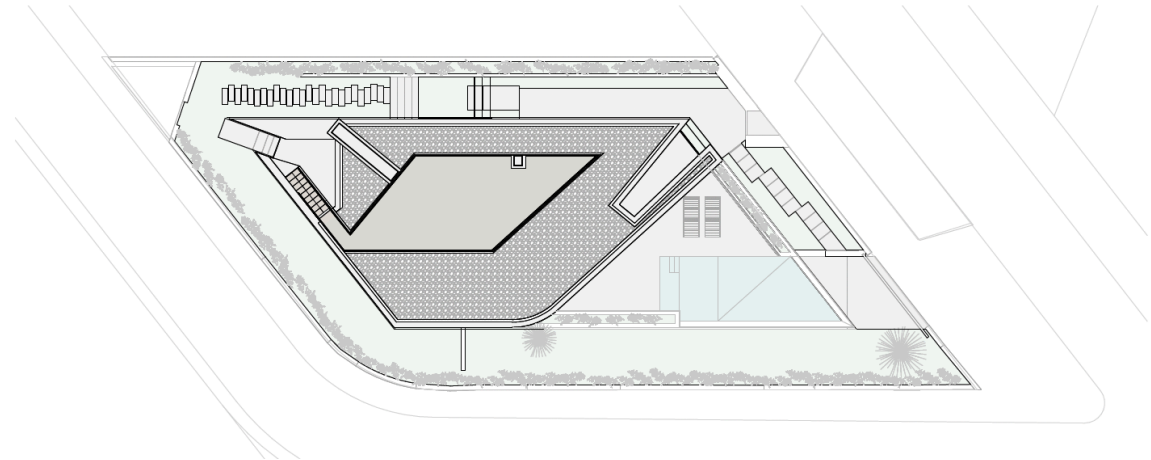
AREAS OF THE PROJECT:

Gross Construction Area: 219.15 m²

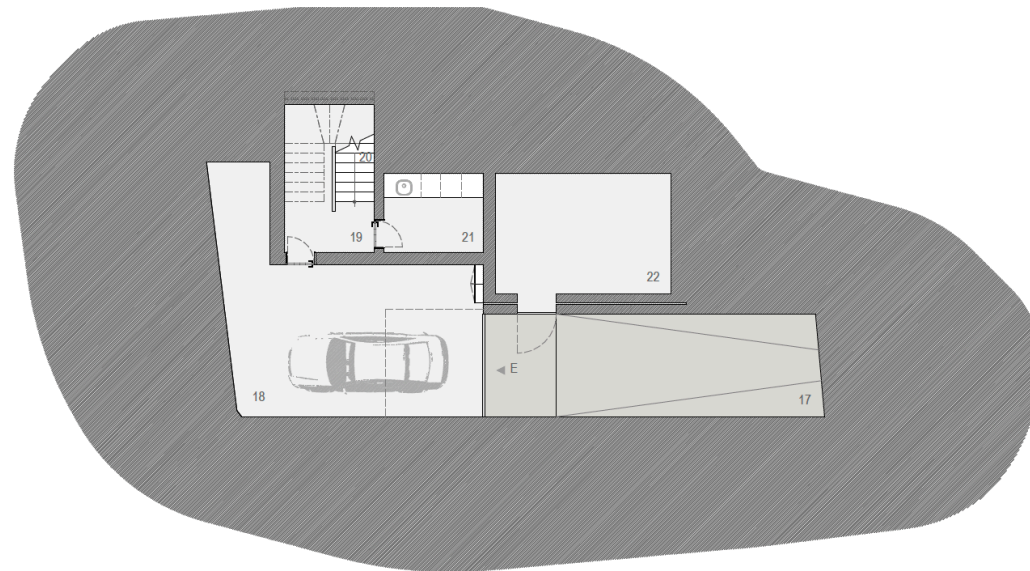
-Habitation Area: 195.10 m²

-Covered Terraces: 24.05 m²

Basement Area: 106.45 m²



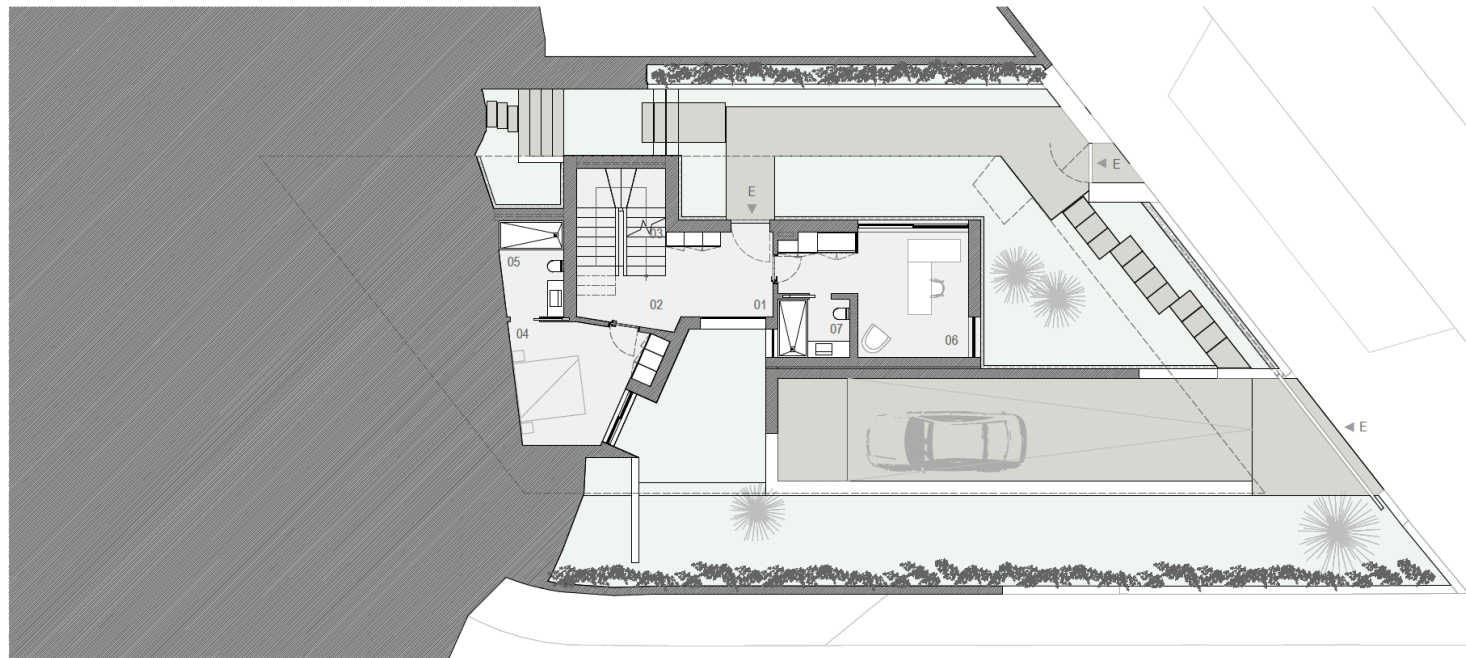
BASEMENT FLOOR
(not included in GCA)
Suplementar Area:
106.45 m²



17. Access ramp	
18. Garage	41.90 m ²
19. Circulation	9.60 m ²

20. Ground Floor Staircase	2.15 m ²
21. Laundry Room	7.35 m ²
22. Technical Room	20.00 m ²

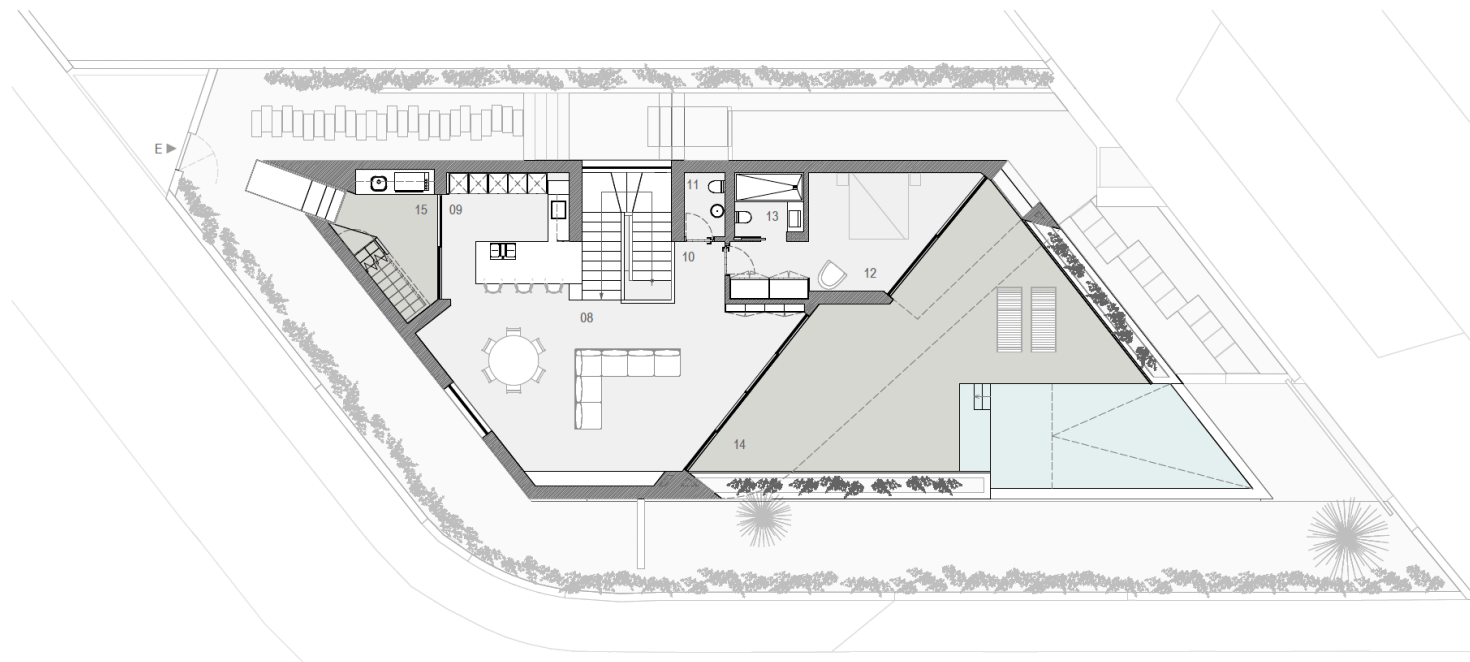
GROUND FLOOR
 Habitation Area:
 83.70 m²
 Covered Terrace Area:
 2.95 m²



01. Entrance Hall	9.05 m ²	05. Private Bathroom 01	5.65 m ²
02. Circulation	4.40 m ²	06. Office Room	18.20 m ²
03. 1st Floor Staircase	9.50 m ²	07. Bathroom 02	3.95 m ²
04. Bedroom 01	13.70 m ²		

GROUND FLOOR PLAN
 PLOT 8

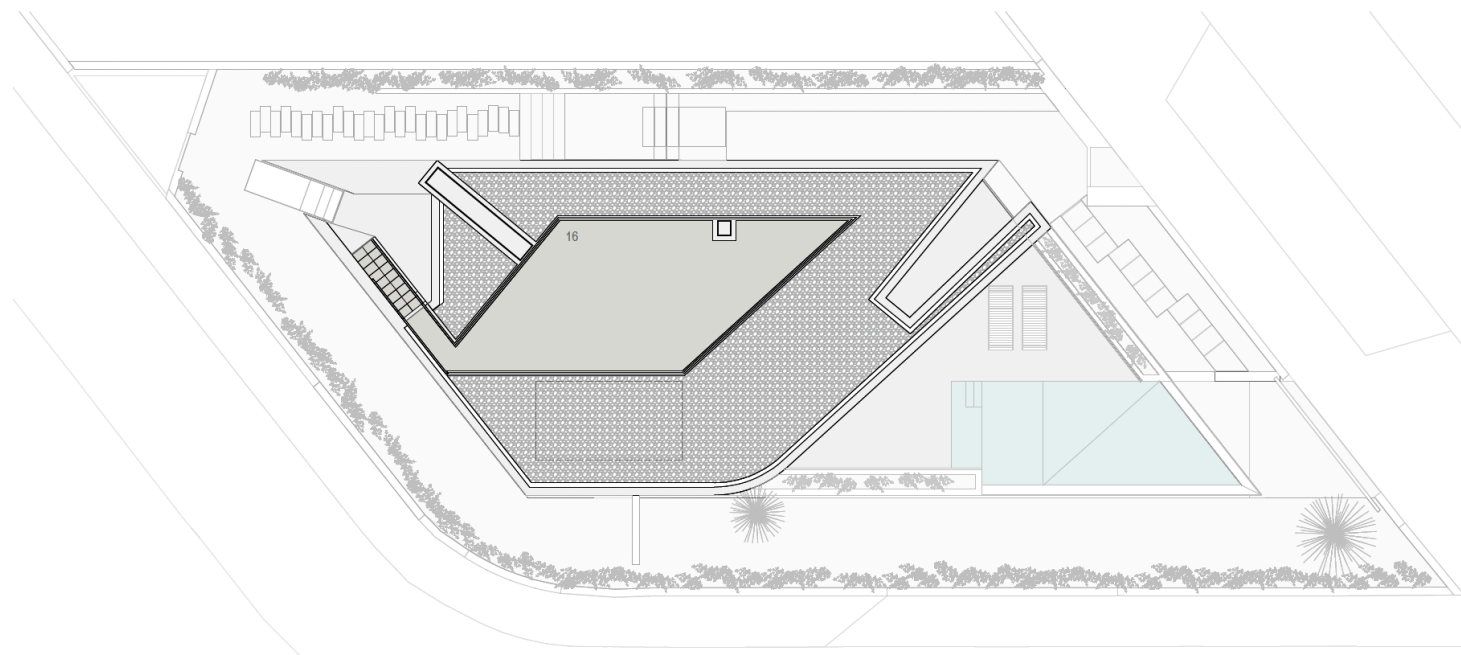
FIRST FLOOR
 Habitation Area:
 111.40 m²
 Covered Terraces Area:
 21.10 m²



08. Living and Dining Room	46.60 m ²
09. Kitchen	14.65 m ²
10. Circulation	2.90 m ²
11. Toilet	2.45 m ²

12. Bedroom 02	18.60 m ²
13. Bathroom 02	4.00 m ²
14. Terrace	55.35 m ²
15. Barbecue	8.35 m ²

Gross Const. Area:
219.15 m²
Plot Construction Area:
220.00 m²



16. Technical terrace 39.30 m²

ROOF FLOOR PLAN
PLOT 8