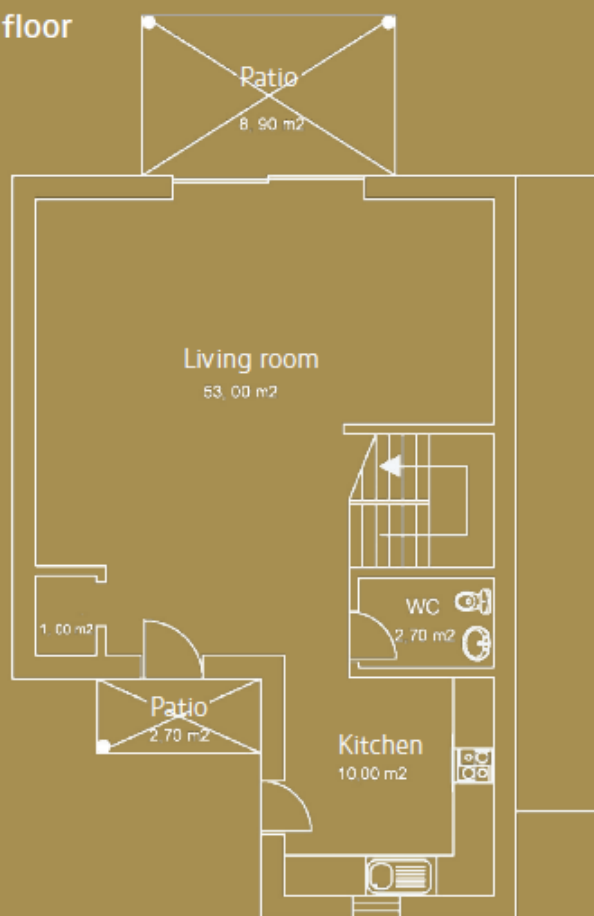
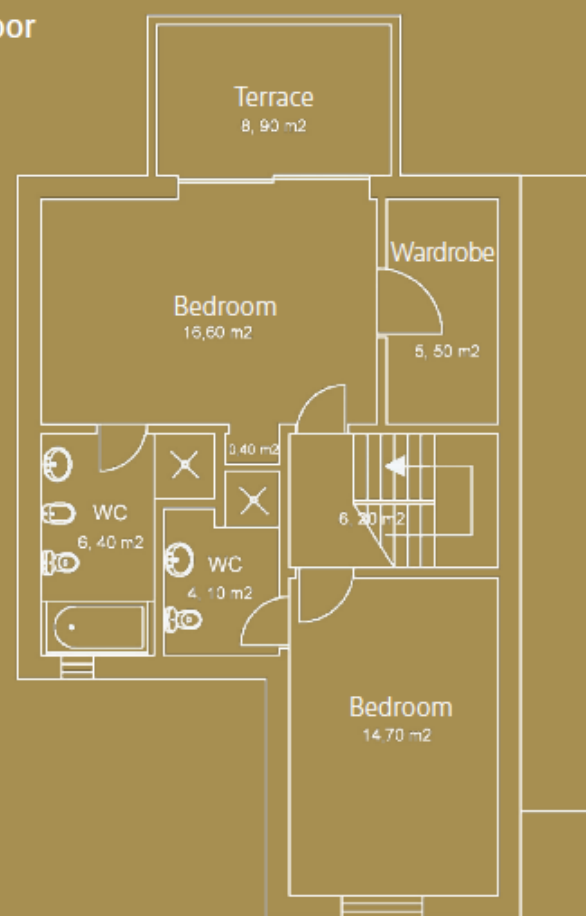


Ground floor



First floor



### Ground floor

Gross area = 74,8m<sup>2</sup>

Net area = 66,7m<sup>2</sup>

Patio = 11,60m<sup>2</sup>

### First floor

Gross area = 55,8m<sup>2</sup>

Net area = 49,8m<sup>2</sup>

Terrace = 8,90m<sup>2</sup>

### Total areas

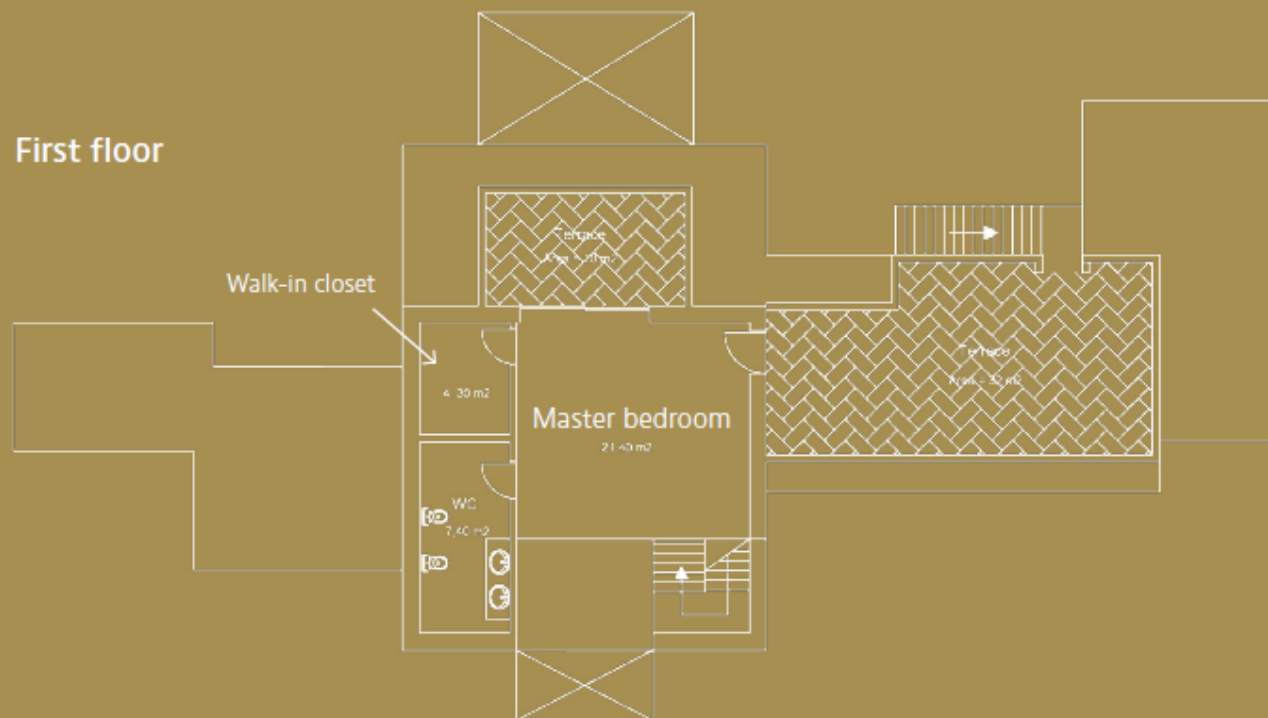
Gross area = 130,6m<sup>2</sup> Terrace = 8,90m<sup>2</sup>

Net area = 116,5m<sup>2</sup>

Patio = 11,60m<sup>2</sup>

\* example floor-plan of a 2-bedroom town-house, in this case property 247

## First floor



\* example floor-plan of  
a 3-bedroom villa, in this  
case property 375

## First floor

Gross area = 40,8m<sup>2</sup>  
Net area = 33,1m<sup>2</sup>  
Terrace = 42m<sup>2</sup>

## Ground floor

Gross area = 164,2m<sup>2</sup>  
Net area = 133,2m<sup>2</sup>

Paving = 19m<sup>2</sup>  
Pool = 40m<sup>2</sup>  
Parking = 21m<sup>2</sup>  
Patio = 16m<sup>2</sup>

## Total areas

Gross area = 205m<sup>2</sup>  
Net area = 166,3m<sup>2</sup>

## Ground floor

